

OFFICE FOR LEASE

220 S. California Ave., #250, Palo Alto



- ◆ **Suite:** ±478 rentable sq. ft. with window office, reception area, utility room
- ◆ **Prime Location:** California Avenue district shops, cafes, services
- ◆ **Transit:** walking distance from CalTrain
- ◆ **Parking:** immediately adjacent to City garage
- ◆ **Available:** 7/1/2010



Contact: Marty Smith

Alhouse Deaton

MANAGEMENT & LEASING, INC.

Stanford Financial Square
2600 El Camino Real, Suite 100

Palo Alto, CA 94306

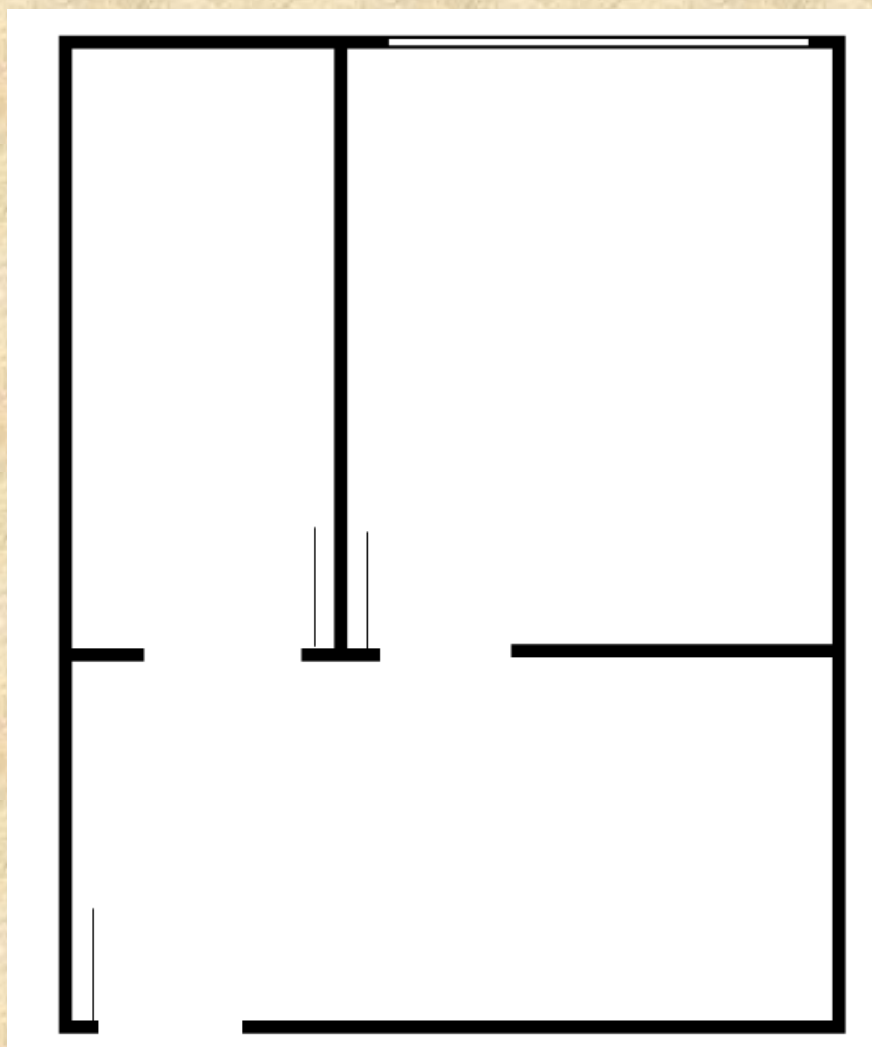
Tel. (650) 857-0116, ext. 108

Fax. (650) 852-0361

msmith@alhousedeaton.com

"The information contained herein has been given to us by the owner of the property or other sources we deem reliable. We have no reason to doubt its accuracy, but we do not guarantee it."

OFFICE FOR LEASE
220 S. California Ave., #250, Palo Alto



Not Exact. Not to Scale.

Contact: Marty Smith
Alhouse Deaton
MANAGEMENT & LEASING, INC.

Stanford Financial Square
2600 El Camino Real, Suite 100
Palo Alto, CA 94306
Tel. (650) 857-0116, ext. 108
Fax. (650) 852-0361

msmith@alhousedeaton.com